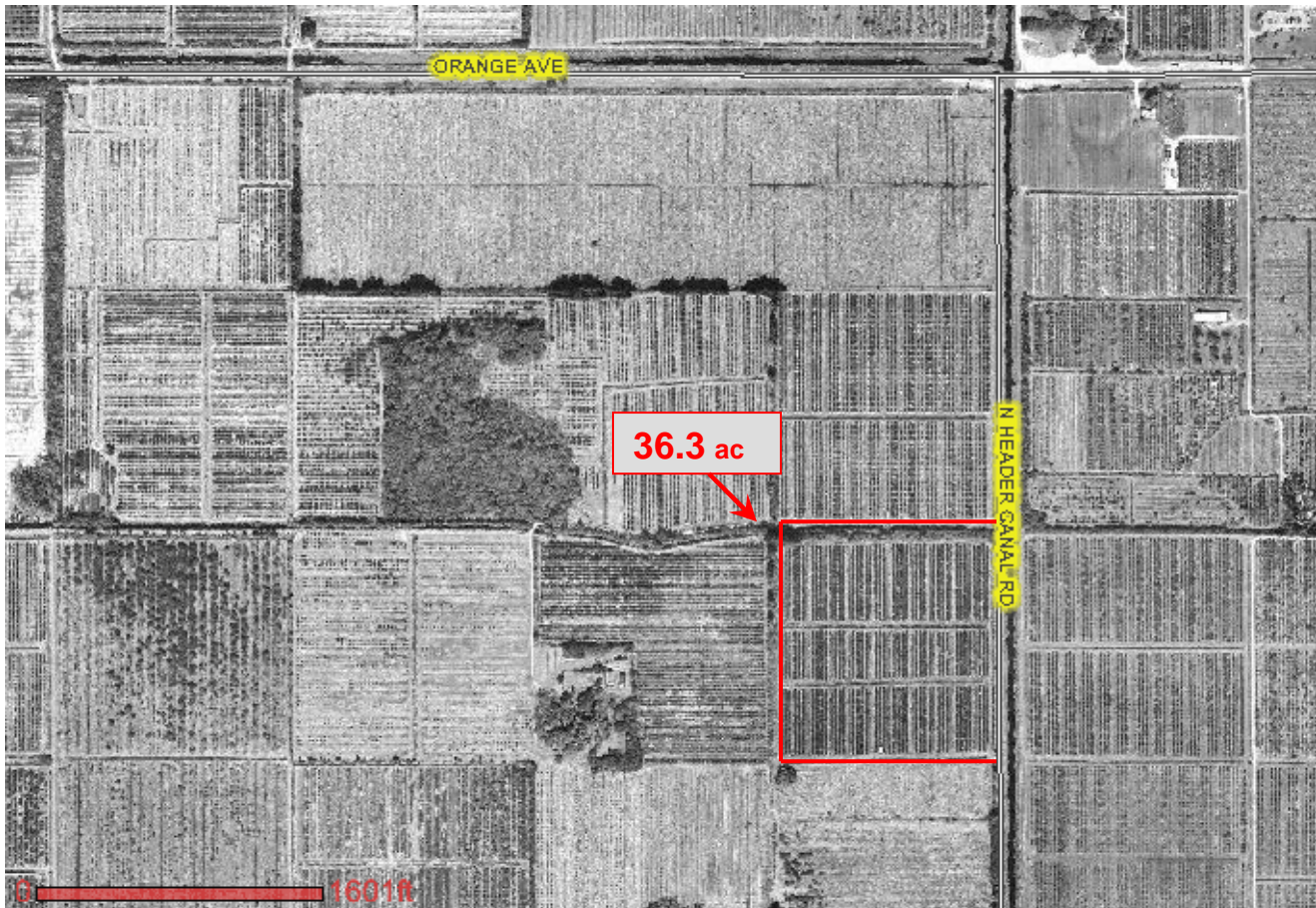


36.3 ac Murcott Grove / Investment Parcel

Header Canal Road, St. Lucie County



- 1275 ft Paved Frontage by 1240 ft deep
 - AG – 5 Zoning, AG taxes
 - $\frac{3}{4}$ mile south of Orange Av / SR68
- 4.25 miles north of Okeechobee Rd / SR70

Price: \$780,500 Call – Mark Walters