



39⁺/- ac Tract

Fort Pierce, Saint Lucie County, Florida

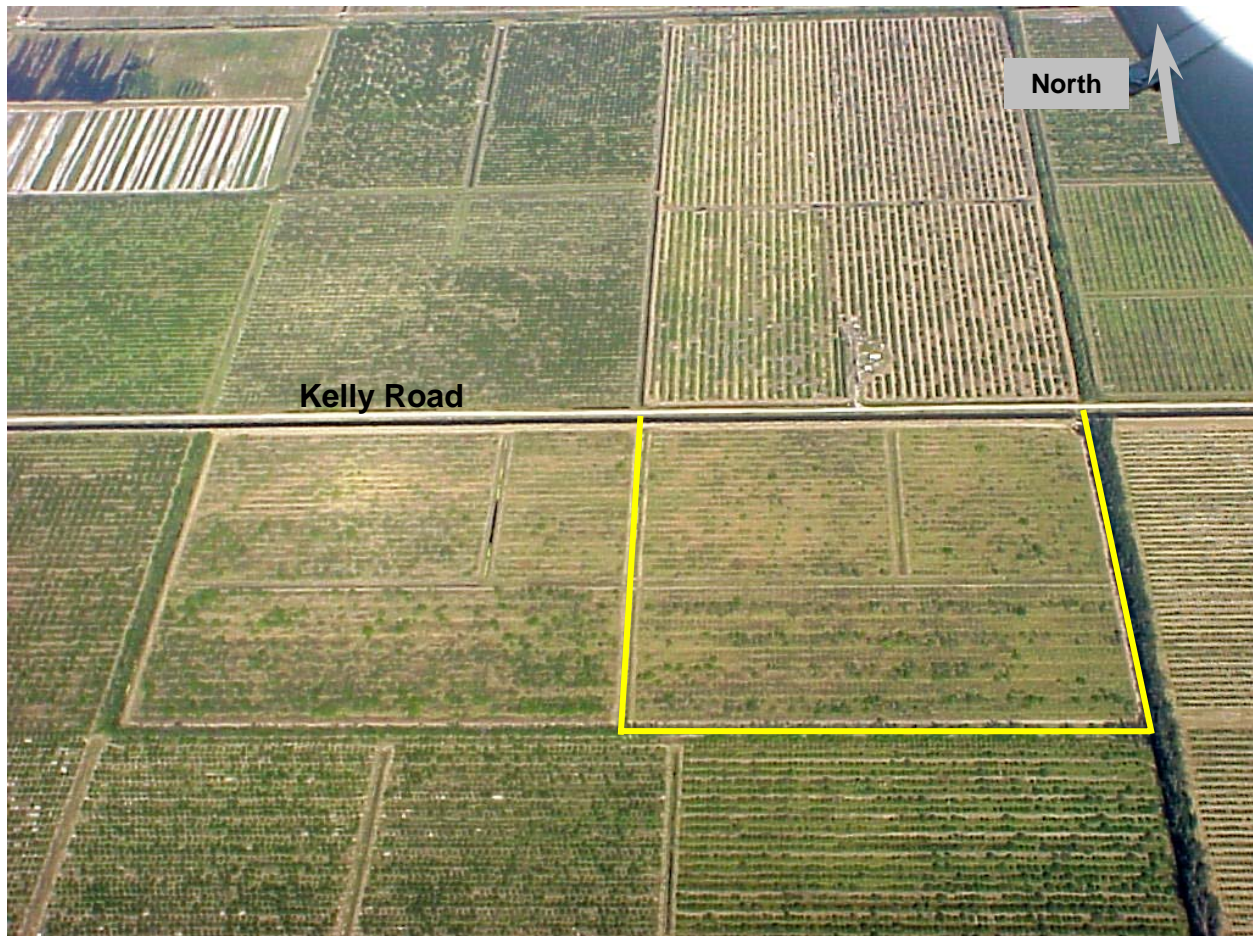
\$295,000

1,330 ft Kelly Road Frontage

6.5 miles west of I-95 & 1.5 miles south of Orange Ave / SR68

Ag-5 Zoning: one dwelling unit per five acres

Currently fenced for cattle grazing with Ag-exempt taxes



I-95 Directions: Exit at Orange Av-West; go west 6.5 miles to Header Canal Road. Turn left (south) and go 1.5 miles to Kelly Rd on right. Go west 1 mile to property.

www.waltersco.com • e-mail: mark@waltersco.com
962 SW Bayshore Blvd • Port St Lucie, FL 34983
(772) 468-8306 • fax (772) 621-9606
FLAU1555AB1833