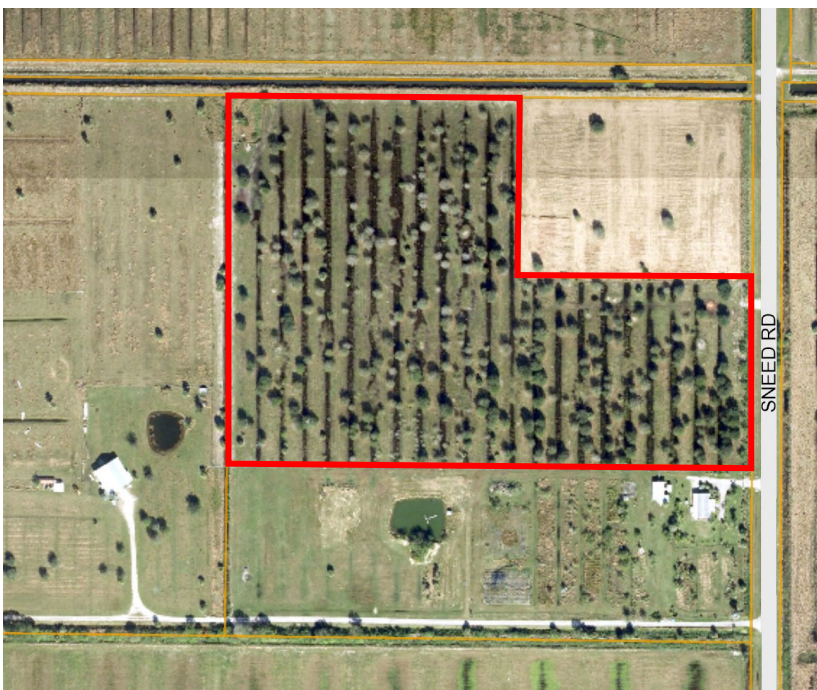


# 20<sub>ac</sub> Pasture

3171 Sneed Road

Fort Pierce, St Lucie County, FL 34945

- Zoning: AG - 5, Agricultural
- Agricultural Exempt Taxes for Grazing
- 450ft Paved Sneed Road Frontage
- 1,265ft Deep; 879ft Wide at rear
- Mature Oak Trees
- PID # 2228-111-0003-000-8
- MLS # RX-10579966



**\$360,000.**

**W**  
**& co.**  
**mark walters**  
**& company**  
real estate brokers & auctioneers

[www.waltersco.com](http://www.waltersco.com) • email: [mark@waltersco.com](mailto:mark@waltersco.com)  
531 South US Hwy 1, Suite B • Fort Pierce, FL 34950  
Office (772) 468-8306 • Cell (772) 201-5650 • Fax (772) 497-5096