

20± ac Tract

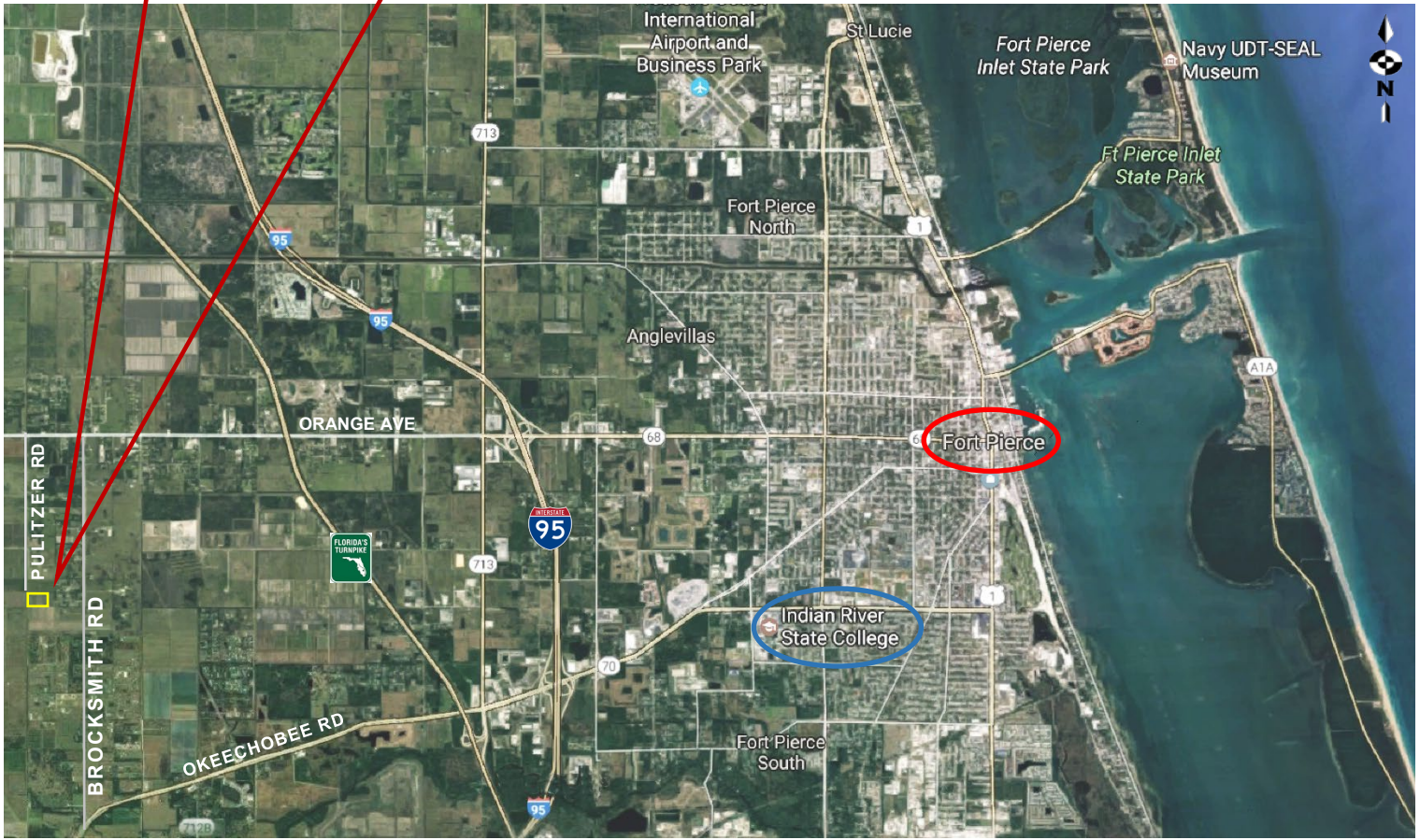
Fenced Pasture with Pond & Oak Trees throughout

2080 Pulitzer Rd

Saint Lucie County, FL

Desirable location in area of Equestrian Estates and small Ranches.

NO Property Owners' Association or HOA Fees



- Zoning: AG - 5: Agricultural (allows 1 dwelling unit per five acres)
- Currently has Ag Tax Exemption Status; 2018 RE Taxes only \$433.02
- Access from Pulitzer Rd or by Recorded Easement from Brocksmith Rd
- 1.5 miles South of Orange Av & 1.75 miles North of SR70
- Convenient, quick access to SR68, SR70, I-95 and FL Turnpike
- SL County PID 2317-333-0000-000-2; MLS # RX - 10568218

\$340,000.

W mark walters & company
 real estate brokers & auctioneers
 & co. **772-468-8306**
www.waltersco.com

www.waltersco.com • email: mark@waltersco.com
 531 South US Hwy 1, Suite B • Fort Pierce, FL 34950
 Office: (772) 468-8306 • Cell: (772) 201-5650
 FLAU1555AB1833