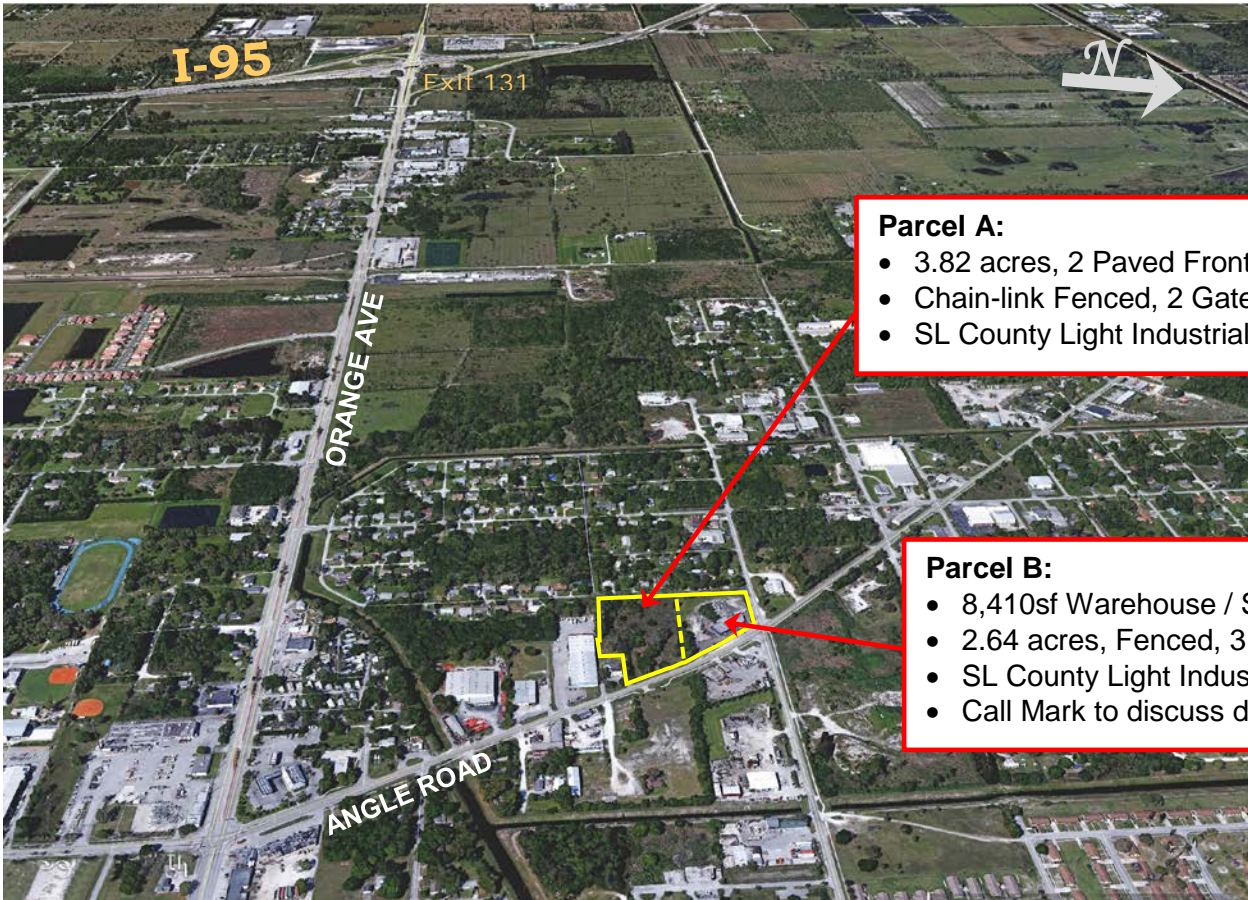


FOR SALE
3.82ac Industrial Land

407 Angle Road, Saint Lucie County, FL



- 3.82ac Yard with 2 Paved Frontages, 6' Chain Link Security Fencing and 2 Gated Entrances
- St Lucie County IL- Light Industrial Zoning; PID: 2408-213-0004-000-0; 2016 RE Taxes \$6,309.
- Location Offers Excellent Access to I-95; is only 2¼ miles from Exit 131 / Orange Ave
- Zoning allows many varied uses including production, distribution & repair facilities
- Adjacent Industrial parcel with 8,410sf Warehouse / Shop is also Available - Call to Discuss
- From I-95: take Exit 131 at Orange Ave, go E 2 miles to Angle Rd, then N .4mi to property on left

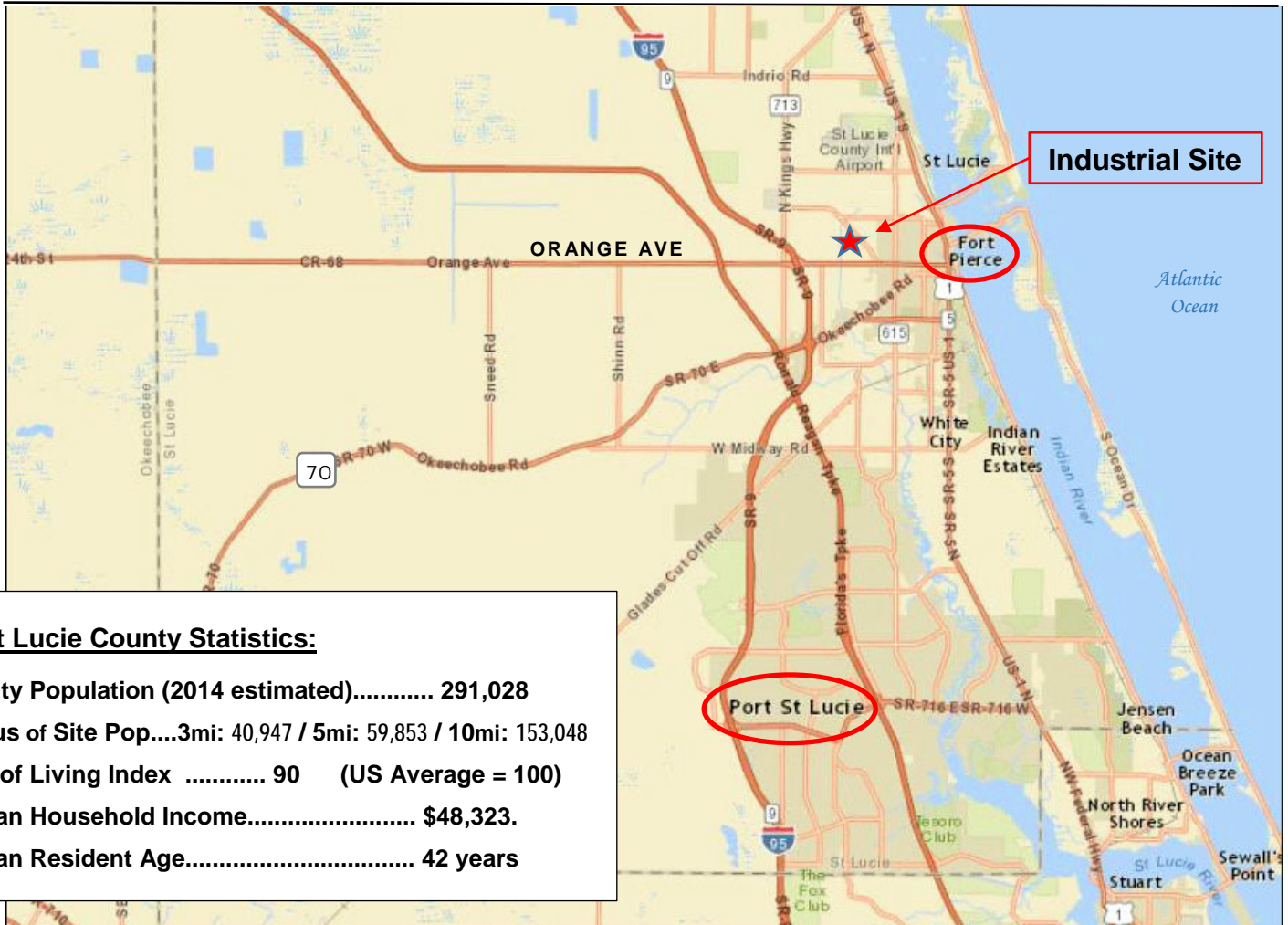


Parcel A:

- 3.82 acres, 2 Paved Frontages
- Chain-link Fenced, 2 Gated Entries
- SL County Light Industrial Zoning

Parcel B:

- 8,410sf Warehouse / Shop
- 2.64 acres, Fenced, 3 Gated Entries
- SL County Light Industrial Zoning
- Call Mark to discuss details



Saint Lucie County Statistics:

County Population (2014 estimated)..... 291,028
 Radius of Site Pop....3mi: 40,947 / 5mi: 59,853 / 10mi: 153,048
 Cost of Living Index 90 (US Average = 100)
 Median Household Income..... \$48,323.
 Median Resident Age..... 42 years

Saint Lucie County Zoning Description:

IL - INDUSTRIAL, LIGHT

1. Purpose. The purpose of this district is to provide and protect an environment suitable for light manufacturing, wholesale, and warehousing activities that do not impose undesirable noise, vibration, odor, dust, or other offensive effects on the surrounding are, together with such other uses as may be necessary to and compatible with light industrial surroundings. The number in "()" following each identified use corresponds to the SIC code reference described in Section 3.01.02(B). The number 999 applies to a use not defined under the SIC code but may be further defined in Section 2.00.00 of this Code.

2. Permitted Uses:

- a. Business services. (73)
- b. Communications - including telecommunication towers - subject to the standards of Section 7.10.23. (48)
- c. Construction services:
 - (1) Building construction - general contractors. (15)
 - (2) Other construction - general contractors. (16)
 - (3) Construction - special trade contractors. (17)
- d. Engineering, architectural and surveying services. (871)
- e. Commercial fishing. (091)
- f. Laundry, cleaning and garment services. (721)
- g. Local and suburban transit. (41)
- h. Manufacturing:
 - (1) Food and kindred products. (20)
 - (2) Tobacco products. (21)
 - (3) Textile mill products. (22)
 - (4) Apparel and other finished products. (23)
 - (5) Furniture and fixtures. (25)
 - (6) Printing, publishing and allied industries. (27)
 - (7) Drugs. (283)
 - (8) Leather and leather products. (31)
 - (9) Glass:
 - (a) Flat glass. (321)
 - (b) Glass and glassware - pressed or blown. (322)
 - (c) Glass products - made of purchased glass. (323)
 - (10) Fabricated metal prod. - except machinery and transport. equip.:
 - (a) Metal cans and shipping containers. (341)
 - (b) Cutlery, handtools and general hardware. (342)
 - (c) Heating equipment, except electric and warm air, and plumbing fixtures. (343)
 - (d) Fabricated structural metal products. (344)
 - (e) Coating, engraving and allied services. (347)
 - (f) Miscellaneous fabricated metal products:
 - (1) Wire products. (3495)
 - (2) Misc. fabricated wire products. (3496)
 - (3) Metal foil and leaf. (3497)
 - (4) Fabricated metal products - NEC. (3499)
 - (11) Industrial/commercial machinery and computer equipment:
 - (a) Metalworking machinery and equipment. (354)
 - (b) Special industry machinery, except metalworking machinery. (355)
 - (c) General industrial machinery and equipment. (356)
 - (d) Computers and office equipment. (357)

- (12) Electronic and other electrical equipment and components, except computer equipment:
 - (a) Household appliances. (363)
 - (b) Electric lighting and wiring equipment. (364)
 - (c) Household audio and video equipment. (365)
 - (d) Communications equipment. (366)
 - (e) Electronic components and accessories. (367)
 - (f) Misc. electrical machinery equipment and supplies. (369)
- (13) Measuring, analyzing and controlling instruments. (38)
- (14) Photographic, medical and optical goods. (38)
- (15) Watches and clocks. (38)

- (16) Misc. manufacturing industries:
 - (a) Jewelry, silverware, and platedware. (391)
 - (b) Musical instruments and parts. (393)
 - (c) Dolls, toys, games and sporting goods. (394)
 - (d) Pens, pencils, and other office and artists' materials. (395)
 - (e) Costume jewelry, costume novelties, and notions. (396)
 - (f) Brooms and brushes. (3991)
 - (g) Signs and advertising displays. (3993)
 - (h) Morticians goods. (3995)
 - (i) Manufacturing industries, NEC. (3999)
- (17) Plastic products - fabrication, molding, cutting, extrusion, and injection processing. (308)
- i. Marinas. (4493)
- j. Millwork and structural wood members. (243)
- k. Motion pictures. (78)
- l. Motor freight transportation and warehousing. (42)
- m. Repair services:
 - (1) Automotive and automotive parking. (75)
 - (2) Electrical. (762)
 - (3) Watch, clock and jewelry repair. (763)
 - (4) Reupholstery and furniture repair. (764)
 - (5) Misc. repairs and services. (769)
- n. Retail trade:
 - (1) Lumber and other building materials. (521)
 - (2) Paint, glass and wallpaper. (523)
 - (3) Hardware. (525)
 - (4) Nurseries, lawn and garden supplies. (526)
 - (5) Mobile home dealers. (527)
 - (6) Automotive/boat/RV/motorcycle dealers. (55)
 - (7) Gasoline service. (55)
 - (8) Furniture and furnishings. (57)
- o. Research, development, and testing services. (873)
- p. Ship, boat building and repairing - less than forty-five (45) ft. (373)
- q. Sorting, grading and packaging services - citrus/vegetables. (0723)
- r. Vocational Schools. (824)
- s. Wholesale trade - durable goods:
 - (1) Motor vehicle and automotive equipment. (501)
 - (2) Furniture and home furnishings. (502)
 - (3) Lumber and other building materials. (503)
 - (4) Professional and commercial equipment/supplies. (504)
 - (5) Metals and minerals except petroleum. (505)
 - (6) Electrical goods. (506)

- (7) Hardware, plumbing and heating equipment, and supplies. (507)
- (8) Machinery, equipment, and supplies. (508)
- (9) Misc. durable goods:
 - (a) Sporting and recreational goods. (5091)
 - (b) Toys and hobby goods. (5092)
 - (c) Jewelry, watches, precious stones and metals. (5094)
 - (d) Durable goods NEC. (5099)
- t. Wholesale trade - nondurable goods:
 - (1) Paper and paper products. (511)
 - (2) Drugs. (512)
 - (3) Dry goods and apparel. (513)
 - (4) Groceries and related products. (514)
 - (5) Farm products - raw materials. (515)
 - (6) Chemicals, and allied products. (516)
 - (7) Beer, wine, and distilled alcoholic beverages. (518)
 - (8) Misc. nondurable goods:
 - (a) Farm supplies. (5191)
 - (b) Books, periodicals and newspapers. (5192)
 - (c) Flowers, nursery stock and florists' supplies. (5193)
 - (d) Tobacco/tobacco products. (5194)
 - (e) Paints, varnishes and supplies. (5198)
 - (f) Nondurable goods, NEC. (5199)
- u. Mobile food vendors. (999)
- v. Single family detached dwelling units provided that the single family dwelling unit is located on an existing lot or parcel or record, as further defined in this Code, that was existing on or before August 1, 1990. (999)

3. Lot Size Requirements. Lot size requirements shall be in accordance with Section 7.04.00.

4. Dimensional Regulations. Dimensional requirements shall be in accordance with Section 7.04.00.

5. Offstreet Parking and Loading Requirements. Offstreet parking & loading req. are subject to Section 7.06.00.

6. Landscaping Requirements. Landscaping requirements are subject to Section 7.09.00.

7. Conditional Uses:

- a. Airports, landing and takeoff fields - general aviation. (4581)
- b. Manufacturing:
 - (1) Cut stone and stone products. (328)
 - (2) Motorcycles, bicycles, and parts. (375)
 - (3) Wood containers, wood buildings and mobile homes. (244/245)
- c. Ship, boat building & repairing (excluding ship or boat salvaging), forty-five(45) to one hundred fifty(150)ft. (373)
- d. Wholesale:
 - (1) Petroleum bulk stations and terminals.
- e. Scrap and waste materials - subject to the provisions of Section 7.10.12.A.

8. Accessory Uses. Accessory uses are subject to the requirements of Section 8.00.00 and include the following:

- a. Co-generation facilities. (999)
- b. Fueling facilities. (999)
- c. Industrial wastewater disposal. (999)
- d. One detached single-family dwelling or mobile home for on-site security purposes per property. (999)
- e. Retail trade accessory to the primary manufacturing or wholesaling use. (999)